

8-2

Practice

Form G

The Reciprocal Function Family

Graph each function. Identify the x - and y -intercepts and the asymptotes of the graph. Also, state the domain and the range of the function.

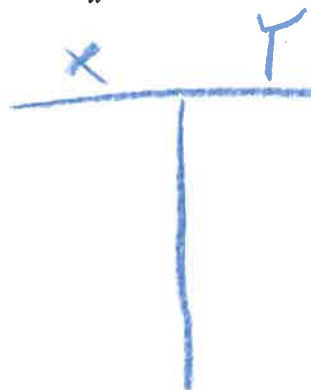
1. $y = \frac{12}{x}$



2. $y = \frac{5}{x}$

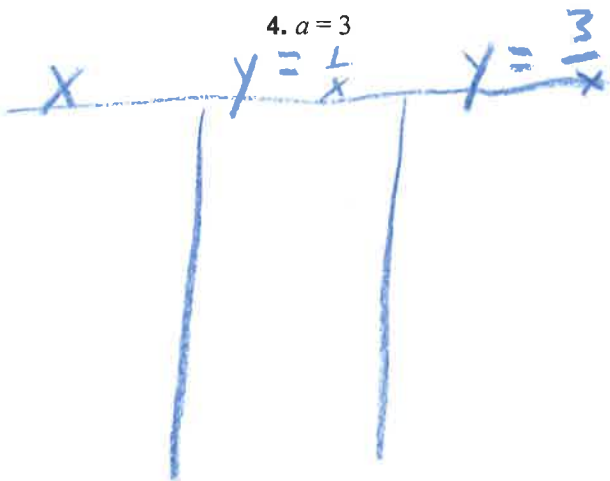


3. $y = -\frac{4}{x}$



Graph the equations $y = \frac{1}{x}$ and $y = \frac{a}{x}$ using the given value of a . Then identify the effect of a on the graph.

4. $a = 3$



5. $a = -5$

6. $a = 0.4$

